

ANNUAL  
REPORT

---

FISCAL YEAR  
2025



Est. 1976

Kelly Anne Dolan  
Memorial Fund

# A LETTER FROM OUR EXECUTIVE DIRECTOR

Dear Friends,

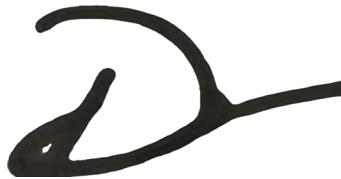
Each year, I'm reminded of the incredible strength and resilience of the families we serve—and the unwavering generosity of the community that makes our work possible. This past year was no exception.

With your support, the Kelly Anne Dolan Memorial Fund provided critical assistance to thousands of families navigating the immense challenges of caring for a seriously ill, disabled, or injured child. From emergency financial relief to emotional support and advocacy, our team was there—ensuring no family felt alone in their journey.

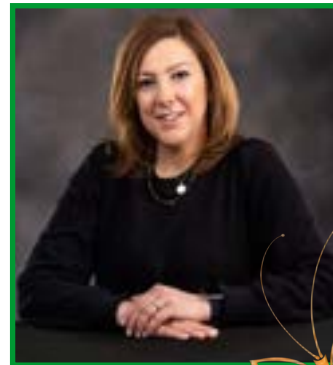
Everything you see in this report represents a real story: a utility bill paid, a child's hospital stay made a little easier, a parent given room to breathe. And behind each of those stories is you—our donors, partners, and advocates—making it all possible.

Thank you for continuing to believe in our mission and for helping us bring Help and Hope to those who need it most.

With Heartfelt Appreciation,



Danielle Scott-Griffith MSW, LSW  
Executive Director



# BOARD OF DIRECTORS 2024-25

## Executive Officers

Peggy Dolan - Co-Founder & Chief Storyteller  
Teresa Araco Rodgers - President  
Tim Jimenez - Vice President  
Amy Field - Treasurer  
Evan Saitsky - Secretary



Board Members at the Ribbon Cutting Ceremony for the opening of the new headquarters

## Board Members

Christine Gordon  
Yvonne McGinley  
Shariffah Azzaam  
Thomas McKee  
Manish Mittal  
Tracey Johnson

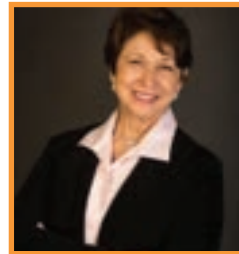
Anthony Cafagna  
Jamie DiRenzo  
Nancy Walsh  
Joanne Uhl  
Rae Wohl  
Nicole Ksiazek\*

\*Committee Member

# STAFF & OUR MISSION



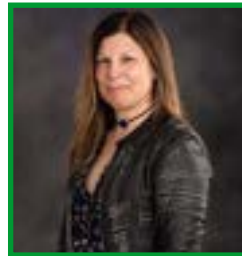
Danielle Scott-Griffith  
Executive Director



Peggy Dolan  
Chief Storyteller



Lauren Van Buren  
Program Manager



Linda Bean  
Community Engagement  
Manager



Thomas Hart Jr.  
Communications &  
Fundraising Manager

## Our Mission

The Kelly Anne Dolan Memorial Fund lightens the burdens and lifts the spirits of families caring for children living with serious and chronic illnesses, conditions, or injuries.

We provide financial assistance and direct support for needs not covered by insurance and a variety of respite programs for families residing in or children receiving care in Pennsylvania, New Jersey and Delaware.

We also advocate for and provide educational resources to families nationwide.

# JUNIOR BOARD 2024-25

## Executive Officers



Michael Fitzgerald  
Co-President



Jessica Fitzgerald  
Co-President



Matthew Primavera  
Vice President



Jacqueline Barrett  
Treasurer



Madelaine Braver  
Secretary

## Board Members



Vincent Cocco



Sam Martino



# SPONSORS & FUNDERS

**We are grateful for the generous support of our foundation and corporate partners:**

## FOUNDATIONS

The Barra Foundation  
W.W. Smith Charitable Trust  
Progeny Charitable Health  
Foxwynd Foundation  
Jenkintown Day Nursery Foundation  
The Windmill Foundation  
Robert and Joan Dircks Foundation  
The Gordon Charter Foundation  
The Child Development Foundation  
Thomas H. Hamilton Foundation Inc.  
Stephen and Mary Birch Foundation  
Foundations Community Partnership  
Jewish Federation of Greater Philadelphia  
The Dale L. Reese Foundation  
Lloyd S. Jackson Charitable Trust  
C. W. Schrenk & Marjorie J. Schrenk  
Foundation  
Dolfinger-McMahon Foundation  
Christian R. and Mary F. Lindback  
Foundation  
Burlington Stores Foundation



## MAJOR INDIVIDUAL DONORS

Anthony and Emily Cafagna  
Stephen and Delores Smith  
Family Foundation  
Steven & Ilene Berman Family  
Foundation  
Poppiny Family  
The Rodgers Family  
Di Stefano Family  
Cucinotta Family  
The Walsh Family  
Mary Gilbert  
Trudy Horrocks  
Mary Beth Toewe  
J. Edmund Mullin  
Katherine Schnittman  
Ksiazek Family  
Katherine Glackin  
Joseph Heenan  
The McKee Family  
The Field Family  
Tim and Marianne Jiminez  
Joanne Uhl  
Rae Wohl  
The Gordon Family  
The DiRenzon Family  
Evan Saitsky  
Peggy Dolan  
The McGinley Family  
Robert and Christine Klein  
The Nana Fund



# SPONSORS & FUNDERS

## CORPORATIONS

harp-weaver LLC  
SEI  
Nappen & Associates  
ASTM International  
IntegraONE  
Eurest  
Hamburg, Rubin, Mullin,  
Maxwell & Lupin, PC  
The Kintock Group  
Ambler Savings Bank  
Fox Rothschild LLP  
Erhardt Mechanical  
The 1916 Company  
Timoney Knox LLP

## COMMUNITY PARTNERS

Spirit of Philadelphia  
Phillies Charites, Inc.  
Tamanend Middle School  
Brynn Johnston  
Woodside Christian Preschool  
Gwynedd Mercy Academy  
Elementary & High School  
Upper Dublin Township  
Ambler Rotary Club  
Spring-Ford Rotary Club  
Kiwanis Club of Ambler  
William Penn Charter School



# PROGRAMS & IMPACT

## Programs Overview

Program	Families Served
Financial Assistance	260
Hope for the Holidays	221
Thanksgiving Assistance	97
Respite Care	87
Caregiver Support Groups	12
Service Projects	1,026
Resources and Research	Over 300

## Up & Coming Programs



ExchangeABLE  
Upcycling Adaptive Equipment

Unity Sports  
Inclusive Sports for all

# YOUR SUPPORT IN ACTION

Thanks to your generosity, we supported an average of 18 families each month this year—families facing unimaginable challenges while caring for a seriously ill child. From July to December, we provided an average of \$5,964 per month in direct bill assistance, helping cover essential expenses like rent, utilities, and transportation. From January to June, that support doubled, with an average of \$12,730 per month going directly to help families stay afloat during some of their most difficult moments. Your donations made this impact possible—and helped keep families together, safe, and cared for.



# FINANCIAL OVERVIEW

## Revenue Sources

Our diverse funding sources demonstrate strong community support and ensure program stability.

### **Revenue Breakdown (Fiscal Year 2025)**

#### **Foundation and Corporate Grants: 33.65%**

Major foundations and corporate partners who recognize our impact and invest in supporting families in crisis.

#### **Events: 22%**

Community fundraising events that bring people together while generating vital resources for our programs.

#### **In-Kind Donations: 20%**

Generous contributions from businesses and individuals that provide direct support to families and reduce operational costs.

#### **Appeals: 15%**

Direct mail and digital outreach that connects us with individual donors who believe in our mission.

#### **School Initiatives: 4.5%**

Educational partnerships that create awareness while generating support from students, faculty, and school communities.

#### **Donor Advised Funds: 2%**

Strategic philanthropists who recommend grants through their donor-advised funds to maximize charitable impact.

#### **Earned Revenue: 1.5%**

Program fees and other income sources that contribute to our financial sustainability.

This diversified approach ensures we can continue providing consistent, reliable support to families regardless of economic conditions or funding fluctuations.

# A YEAR OF HELP AND HOPE

From community events to direct family support, your generosity created countless moments of help and hope throughout 2025.



# NEW HOME SAME HEART

In April 2025, we officially made the move to our new home in the charming Chestnut Hill neighborhood of Philadelphia — and we couldn't be more excited! We celebrated our grand opening with friends, supporters, and community partners, marking a fresh chapter for our organization. We're thrilled to continue our mission from a place that feels just as warm and welcoming as the families we serve.



# PHILADELPHIA SOCIAL INNOVATION AWARDS



## FIRST PLACE -

### SOCIAL INNOVATION AWARDS

We are honored to share that Danielle Scott Griffith was awarded First Place at the Philadelphia Social Innovation Awards. This recognition celebrates our ongoing commitment to innovation, impact, and service to families caring for children with serious illnesses, disabilities, and injuries. We are incredibly proud of this achievement and grateful to our supporters who make this work possible every day.



## PHILADELPHIA PHILLIES PARTNERSHIP

We were so grateful to be recognized for our work at a Philadelphia Phillies game this year. Being acknowledged by such a beloved hometown team was a truly special moment for the Kelly Anne Dolan Memorial Fund. It shined a spotlight on the families we serve and the importance of our mission throughout the region.

# WAYS TO SUPPORT

## Ways to Support Our Mission

Every gift makes a difference at The Kelly Anne Dolan Memorial Fund. We are dedicated to making it simple for you to help us provide financial assistance, respite care, and advocacy for families caring for seriously ill, disabled, or injured children.

There are many ways to give, each designed to work with your personal preferences and resources. Your support brings comfort, relief, and hope to the families we serve. We're so grateful for your kindness and commitment to our mission.

### **Convenient Giving Options**

- **Online Giving** - Give securely through our website at [dolanfund.org](http://dolanfund.org) for immediate impact.
- **Phone Donations** - Call us at 215-643-0763 to make a donation or discuss personalized giving options.
- **Mail Contributions** - Send checks or money orders payable to The Kelly Anne Dolan Memorial Fund to: 8624 Germantown Ave., Rear Philadelphia, PA 19118
- **Wire Transfers** -For larger gifts, we can provide secure wire transfer instructions to our account.
- **Stock Donations** - Donating appreciated stock is a tax-efficient way to maximize your charitable impact. Contact us for transfer details and potential tax benefits.
- **Employer Matching** - Many companies match employee donations, doubling or even tripling your gift's impact. Check with your HR department to see if your employer participates.
- **Donor** - Advised Fund Grants Recommend a grant from your donor-advised fund to support our programs for families in need.

For questions about making a donation, please contact our Executive Director, Danielle Scott Griffith MSW, LSW at [dgriffith@dolanfund.org](mailto:dgriffith@dolanfund.org).

# CONNECT WITH US

## STAY CONNECTED

### CONTACT INFORMATION

dolanfund.org  
Phone: 215-643-0763  
Email: info@dolanfund.org



### SOCIAL MEDIA

Instagram: @dolanfund  
LinkedIn: Kelly Anne Dolan Memorial Fund  
Facebook: Kelly Anne Dolan Memorial Fund  
Mailing Address: Kelly Anne Dolan Memorial Fund  
8624 Germantown Ave. (Rear)  
Philadelphia, PA 19118



# A THANK YOU MESSAGE

Since 1976, the Kelly Anne Dolan Memorial Fund has served as a beacon of hope for families facing unimaginable challenges. Your continued support ensures that no family walks this difficult journey alone. Together, we provide more than financial assistance—we offer hope, dignity, and the knowledge that their community cares.



Est. 1976

## Kelly Anne Dolan Memorial Fund

8624 Germantown Avenue, Rear  
Philadelphia, PA 19118

[dolanfund.org](http://dolanfund.org)

215-643-0763

[info@dolanfund.org](mailto:info@dolanfund.org)